

Bracknell and Surrounds – Early Residents/Property Owners

(A Work in Progress - Updated 5 December 2014 – Ivan Badcock)

Adam,

Ayton, Edward (c1839-1913)
m. Ellen Reeve Clark (c1844 -1920) buried Carrick

Ayton, Robert (c1834-1894)
m. Harriett Rudd (c1843-1925) on 20/9/1861 at Longford

Baker, John

Barker, Thomas Daniel (1848-) m. 20/1/1868 at Longford
m. Eliza Thomas (c1852-)

Bates, Alfred (1841-1894) m. 13/1/1872 both buried Bishopsbourne
m. Elizabeth Matilda Roach (-1929)

Beckett, Richard (1811-1890) buried Bishopsbourne
m. Jane Willson (1822-1901)

Bell, William Thomas (??? b. 1828 m. ???Jane Gee)

Bennett, Roger

Bennett, Thomas (???died at Longford 16/4/1865 aged 55)

Biffin, Eliza (??? BAP at Launceston 1/5/1827)

Boon, Edwin (1831-1909) buried Bracknell (Primitive Methodist Cemetery)
m. Louisa French (1836-1902)

Boon, Joseph William (1854-)
m. Elizabeth Cramp (1852-) on 15/6/1875

Bradshaw, Charles (??? m. Phillis Sophia on 11/2/1875 at Hobart,
m. Sophia Charles aged 35 and Phillis 26)

Butler, Gamaliel (1783-1852) died at Hobart
m. Sarah Paine (1787-1870) on 5/7/1810 at Richmond, England
(Held a grant of 2,560 acres located to the west and south of Bracknell)

Chadwick, James Charles (1834-1890)
m. Hannah (Maria) Page (1843-1921) on 11/9/1862 at Bishopsbourne

Cording, Henry (1857-1924)
m. (1) – Isabella Louisa Boon (1863-1889) on 15/2/1881
m. (2) – Elizabeth Sarah Murfet (1863-1892) on 8/10/1890
m. (3) – Marian Grace Cramp (1866-1943) on 10/1/1900

Cox, Edward John (1839-1914)
m. Ruth Hillier (1844-1910) on 3/9/1862 at Longford

Crisp, Thomas (1823-1896)
m. Elizabeth Clarke (1829-1896)

Cross, William James (1851-1913)
m. Sarah Jane Robert (1851-1923) on 1/1/1874 at Westbury

Dean, William J

Dean, William Matthew (1799-1892)
m.(1) – Mary Ann King (-1839)
m.(2) – Emma Blanchard Houghton (1813-1878) on 30/11/1841 at Launceston

Dumas, James Charles
(An original grant holder of 2,560 acres - later granted to Gamaliel Butler)

Emery, John Henry (1835-1874)
m. Hannah Elizabeth “Anne” Gee (1837-1902)

Field, William (1816-1890)
m.(1) – Sarah Lucas (1821-1861)
m.(2) – Mary Ann (Polly) Page – (1845-1928) on 17/9/1870 at Longford

Goss, John (1848-)
m. Maria Jane Spencer (1852-) on 18/6/1874 at Longford

Goss, William (1841-)
m. Clara Charlotte Spencer (1850-) on 12/12/1868 at Longford

Gurney, John (c1810-1899)

Hall, William (??? died at Westbury 17/1/1858, aged 26)

Hart, James (1845 -)
m. Catherine Stewart Henderson (1846-) on 10/8/1863 at Westbury

Hertel, Balthaser (1831-)
m. Barbara Beutermiller (1840-) on 4/8/1858 at Longford

Hillier, Arthur (1808-1869)
m. Sarah Maria Hance (1819-1891) on 25/5/1837 at Launceston
(Sarah later married James Ross)

Hillier, Arthur (1846-1887)
m. Ann Leonard (1846-1932) on 26/12/1866 at Longford

Hillier, Robert (1837-

Hoad, William (death of child (4), Mary Jane Hoad at Westbury on 27/10/1864)
m. Mary

Hoyle, William ??? (1805-1872)
m. ??? Emma Louisa McGrath (-)

Hynes, Eugene/Auguna (1816-)
m. Margret Cole (1826-) on 10/5/1866

Ives, Jonathan (c1794-1/8/1872)
m. Sarah Basham (-) on 25/5/1824

Jarmy, Benjamin (1842-1931)
m.(1) - Mary Wright (1840-1879) on 14/10/1861 at Illington, Norfolk, England
m.(2) – Hannah Maria Chadwick (nee Page) 1843-1921) on 4/4/1904 at Penguin

Kerkham, Joseph (1822-1911)
m. Sarah Elizabeth Robunson Gould (c.1836-1882) on 23/4/1862 at Longford

Kerkham, Richard (1787)-1863) – later moved to Liffey River farm, Bishopsbourne
m. Jane Allen (1792-1872) – both are buried at Carrick

Johnston D.M.

Johnstone, Charles (-) and White R.M.

Lansdell, Isaac (1843-1930)
m. Frances Elizabeth Sherwood (1843-) on 28/10/1875 at Launceston

Lansdell, William (1843-1930)
m. Sarah Armstrong (1846-) on 9/1/1866 at Emu Bay (Burnie)

Leonard, James (1836-1880)
m. Ann Hillier (1846-1932)

Leonard, James (1824-1910) James and Susan buried Bishopsbourne
m.(1) - Susan Fincham (1827-1898) at England
m.(2) – Eleanor Matilda Bird (1854-) on 23/8/1899 at Longford

Lethborg, John (1820-1895) – died Ringarooma
m. Charlotte Watts (1834-1898)

Lethborg, Samuel ??? (1856-)
m. ??? Mary Reid (1857-) on 31/12/1877 at Morven (Evandale)

Lockett, Henry
Esther Glover (1858-) - born at Longford, parents – John Glover & Harriett Bird

Mann, John (1818-1893)
m. Eliza Davies (1822-1870) on 3/8/1857 at Launceston

Masters, George (1829-1895) – both buried Bracknell, Methodist cemetery
m. Eliza Viney (1832-1908) on December 1851 at Pitney, Somerset, England

Miller, Thomas

Minnett, Paul
m. Deborah

Murfet, Uriah (c1847-1912)
m. Agnes Sarah Ann Potter (1853-1938) on 1 April 1875 at Longford

Page, Robert (1838-1925)
m. Ellen Goss (1850-1912) on 8/2/1866 at Bracknell

Page, William (1813-1887) – William and Sarah are buried at Bracknell Methodist cemetery
m.(1) - Ann Crook (-1848) – buried England
m.(2) - Sarah Upston (nee Page) – (1815-1883)

Pearn, Arthur Thomas (1862-1948)
m.(1) – Sarah Catherine Emery (1860-1891) on 4/11/1886
m.2) – Annie Howard Pride (1864-) on 8/12/1897 at Launceston

Perrin, Edward

Perrin, Esau

Pinner, John (c1802-1879)
m. Elizabeth Hubbard (1802-1877) at England

Pitt, George Henry (1873-1932)
m. Emily Mary Pearn (1868-1946) on 11/4/1898

Pitt, Henry (1849-1936)
m. Emma Jane Potter (1850-1923)

Powell James (1849-)
m. Alice Ann Ward (1855-) on 21/5/1874 at Longford

Preview, Benjamin Anthony (1803-1886) buried Bishopsbourne

Powell, William

Prewer, William (1834-1928)
m. Ann Page (1837-1907) on 20/9/1858

Rainey, James
Esther Cox

Roach, John Charles (1845-1894)
m. Ellen Sarah Bosworth (1859) on 22/9/1876 at Longford

Ross, Charles Henry (1859-1943)
m. Jane Masters (1854-1919) on 17/7/1878

Ross, James (1818-1873)
m. Sarah Hillier (nee Hance) – (1819-1891) on 9/10/1869 at Longford

Ross, William (1848-)
m. Cecilia McQueen (1847-) on 5/5/1868

Rowe, Joshua

Rudge, Frederick (1821-1885) – died at Port Sorell
m. Maria Bean (1821-) on 30/5/1843 at Launceston

Saunders, William

Sayer, William (1835-)
m. Emma Louise Skipper (1835-) on 28/4/1856

Scott William
(See Mary Ann Tyne - below)

Spencer, James (1843-)
m. Maria Jordan (1846-) on 21/12/1868 at Longford

Spencer, William (1845-)
m. Rebecca Jordan (1844-) on 26/12/1870 at Longford

Stebbins, James ? (c.1820-18/6/1878) died at Westbury
m. Sarah Ann Dixon (c1832-15/7/1907)

Stennor, Thomas (1797-1867)
m. Eleanor Grindell (c1788-1874) on 3/2/1823 at Launceston

Stokes, Mary Ann

Swain, George (-1934)
m. Margaret Jane Barker (1851-1937) on 1/3/1869

Tyne/Toyn ?, John ? (c1827-)
m. ? Jane Batey (c1837-) on 24/3/1858 at Longford

Tyne, Mary Ann (1861-) ?
m. ? William Henry Scott (1856-) on 25/7/1884 at Longford

Upston, George John (1839-1924)
m. Eliza Pinner (1842-1915) on 25/4/1867 at Westbury

Upston, William
m. Helena (Sarah)

Wadley, James (1858-1914)
m. Elizabeth Paul (1855-) on 28/4/1880 at Longford

Wadley, Joseph (1838-1903)

m. Louisa Hillier (1842-1910) on 20/7/1864

Wadley, William (1844-)

m. Louisa Lansdell (1847-) on 29/10/1867 at Longford

Wadley, William (1805-1875)

m. Sarah Bates (1821-1887) on 29/12/1836 at Launceston

Whatley, George (1846-1918) – both buried Christ Church, Longford – unmarked grave

m. Jane Rudd (1847-1927) on 4/8/1869

Walker, Francis

Williams, William Francis (1830-1899)

m. Sarah Page (1840-1916)

Wilson, John Henry

Liffey Schoolmaster

m. Jane

Wyatt, William

Yates, Samuel ? (1811-1891) – died at Longford 20/5/1891 (79)

m. ? Mary Aldgate (1820-) on 19/10/1840 at Launceston

“Enfield” Employees

Goss, John

Goss, Robert

Hodgetts, Nathaniel

Keating, James

?McQueen

?Smith

?Wadley

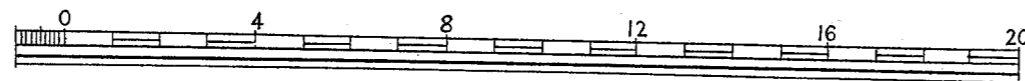
Please advise additions and corrections to:-

Ivan Badcock

Email:- ibadcock@hotmail.com

Telephone – 6397 3558

BRACKNELL



SCALE OF CHAINS

W.F. Darling

October 1890



500 Acres

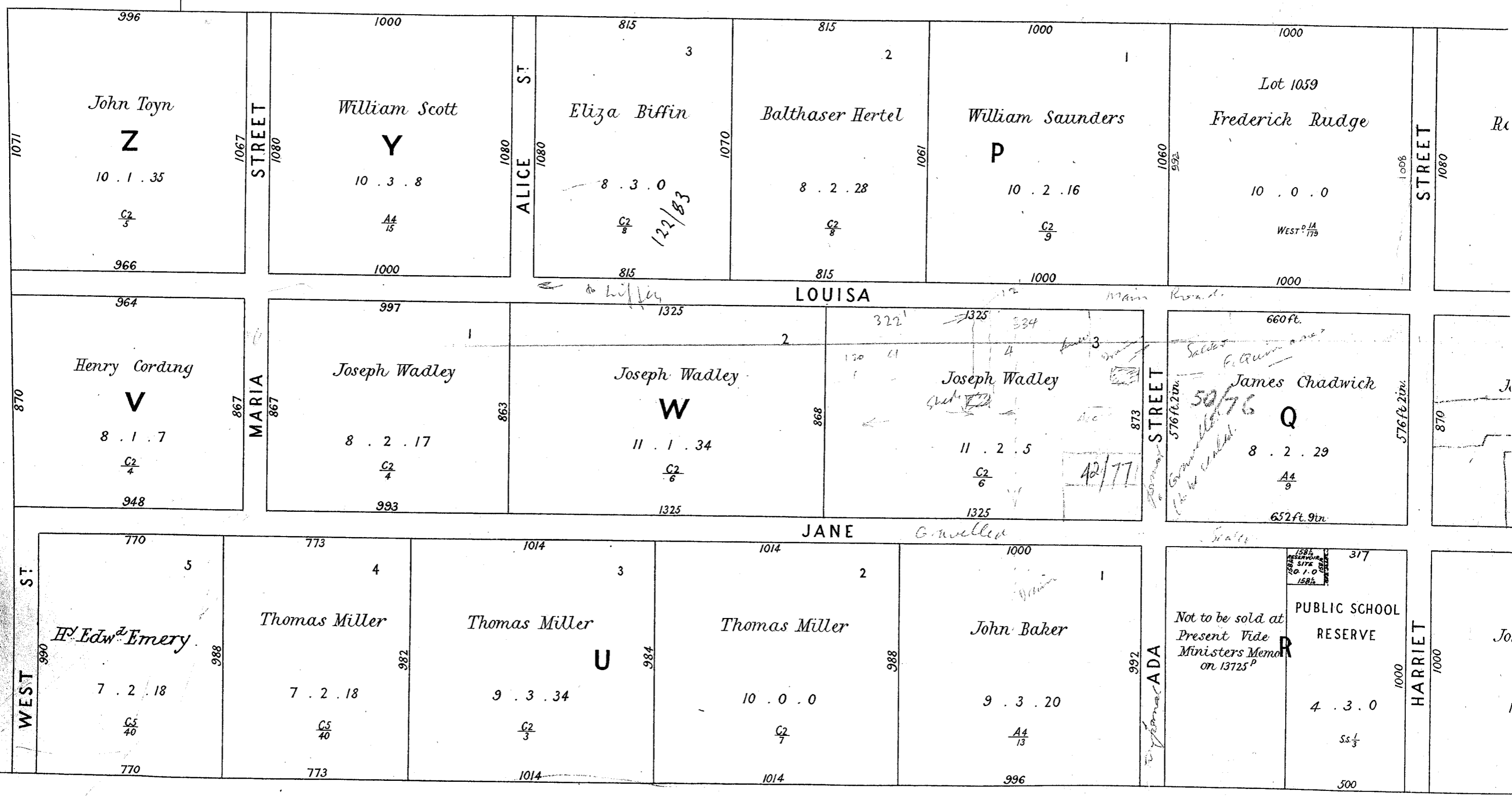
Granted

to

Paul

Minnett

500 Acres Granted to



12/1/83

DIAGRAM FROM ACTUAL SURVEY

TOWN OF
SUBURBS OF BRACKNELL

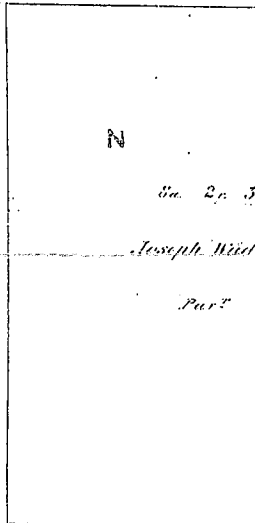
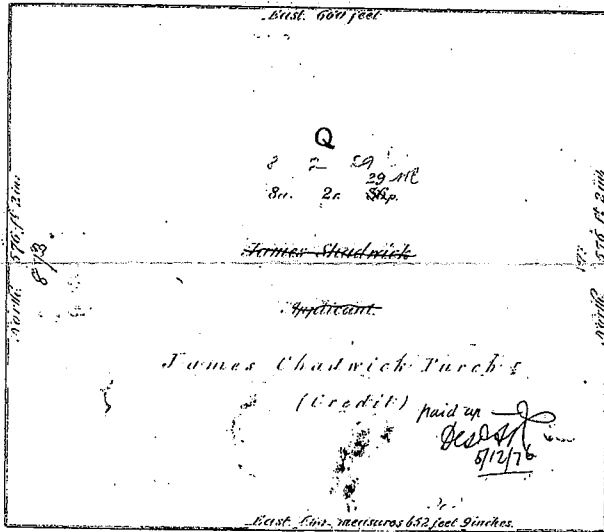
Scale. 2 chains to an inch

M A4
9

LOUISA STREET

ADA STREET

HARRIET STREET



JANE STREET

1867/68

Date of survey 15th Sept 1867.
 Survey completed 5th Nov 1868.
 Date finished 10th Dec 1868.
 Error of plan in 3/2.
 Edited by J.K.
 Finally approved by H.R.
 Entered at General Office by M.R.

Handwritten signature
 Dist. Secy

DIAGRAM FROM ACTUAL SURVEY

TOWN OF ~~SUBURBS OF~~ BRACKNELL

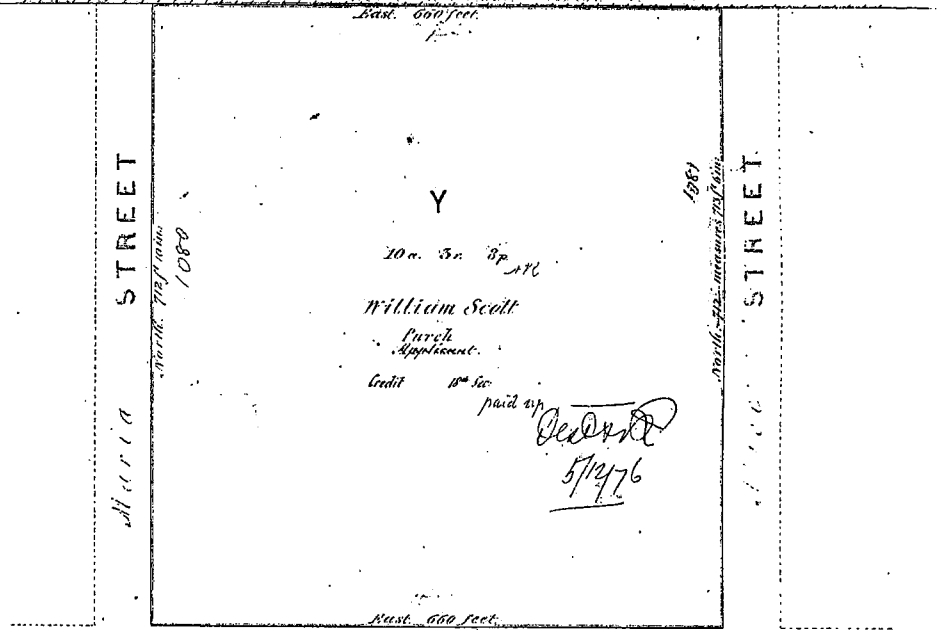
Scale. 2 chains to an inch

A4
15

William Field.

Granted to Paul Bennett

Subject from the T.W.L. of Bracknell.



... chains 25th Oct 5 1877

... used } 1/4th Plan 1868.

... ed

... in 4160.

... H.K.

... assumed by - L.R.

... general plan by - J.P.

1867/68

Handwritten signature

DIAGRAM FROM ACTUAL SURVEY

13

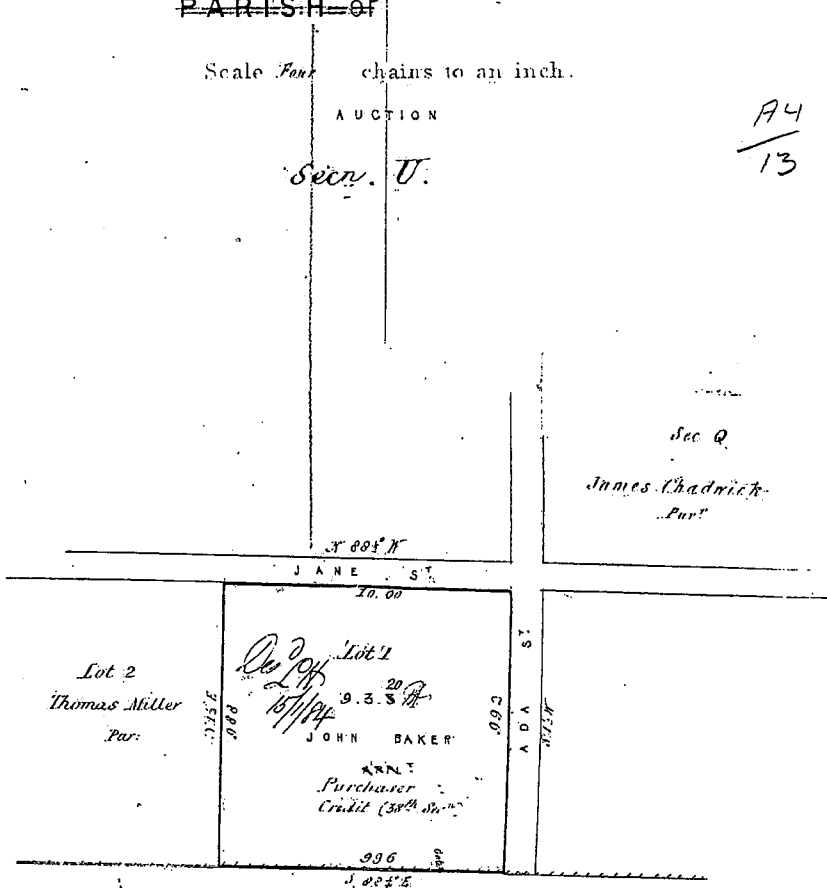
COUNTY OF
TOWN OF BRACKNELL
PARISH OF

Scale Four chains to an inch.

AUCTION

Sec. V.

A4
13



Granted to Paul Minnett
K x k k x m K x k x d 500 ac.

Note. Recommended that no more streets
between Jane St and Fields 540 ac.
be marked. Jane St. is sufficient.
H.A.

Date instructions 31st June 1871
Work commenced 20th July
Ditto finished 11th
Scale 1 in 1000
Examined by
In general plan by

1871

Description. Light sandy soil
No water.

A. Perry Lovell
Deputy Surveyor
July 1871

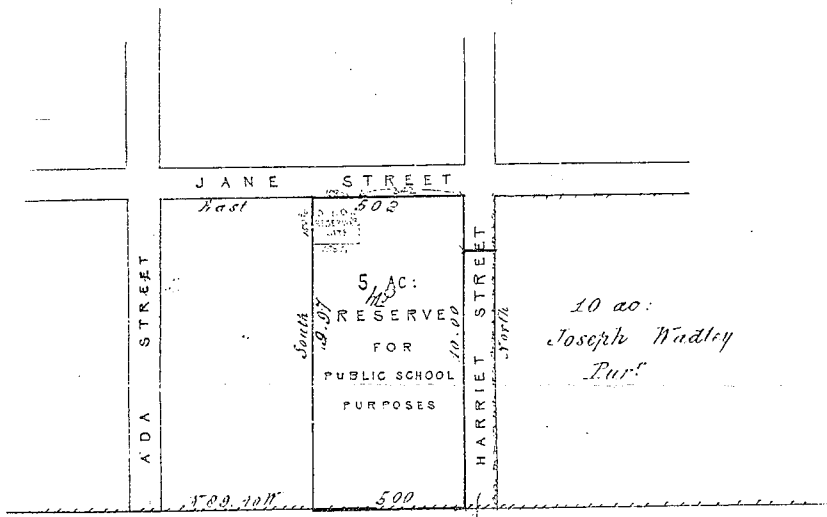
DIAGRAM FROM ACTUAL SURVEY

1/3 SS

COUNTY OF BRACKNELL
PARISH OF

Scale four chains to an inch

See A



500 ac W^m Field
Made available for inclusion in
Bracknell Area School Committee

of instructions 22nd April 1875
commenced 25th "
finished " " "
of class 1 in 1000
led by H.B.
with examined by H.B.
and on General plan by H.B.

1873

Description of land

H. Perry Lovell
Rt. Sec.
April 1875

DIAGRAM FROM ACTUAL SURVEY

COUNTY OF
BRACKNELL TOWNSHIP
PARISH OF

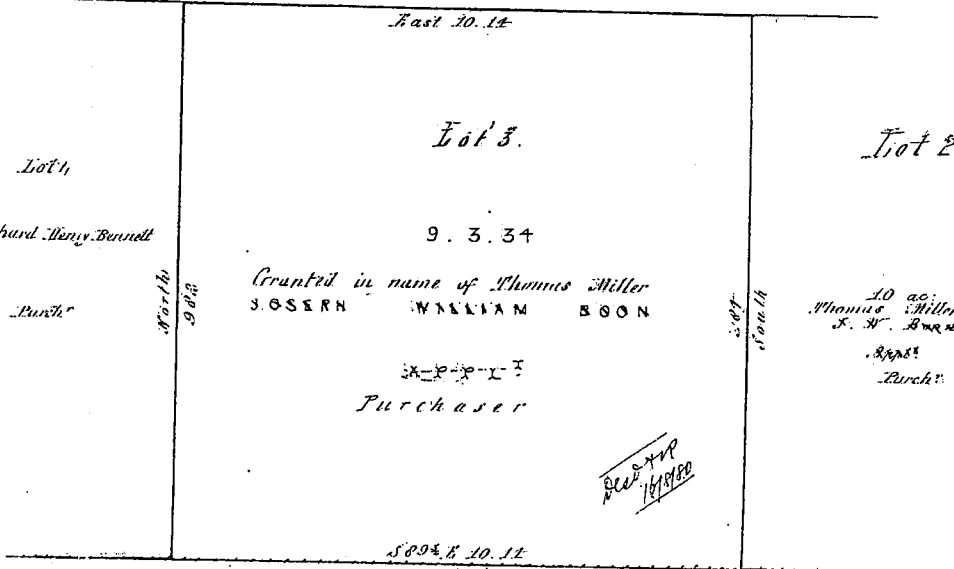
Scale Two chains to an inch.

AUCTION

Sec. 11

12
3
652

J A N E S T



Granted to Paul Minnett
now sold by G.
William Field 500 ac.

Sec 11
1873

Date of instructions 15th August 1873

76354

Work commenced 20th October

Work finished

of close & in appreciable

by

examined by

and on General plan by

[Handwritten signature]

1873

R. Gray Smith
Surveyor
October 1873



5

DIAGRAM FROM ACTUAL SURVEY

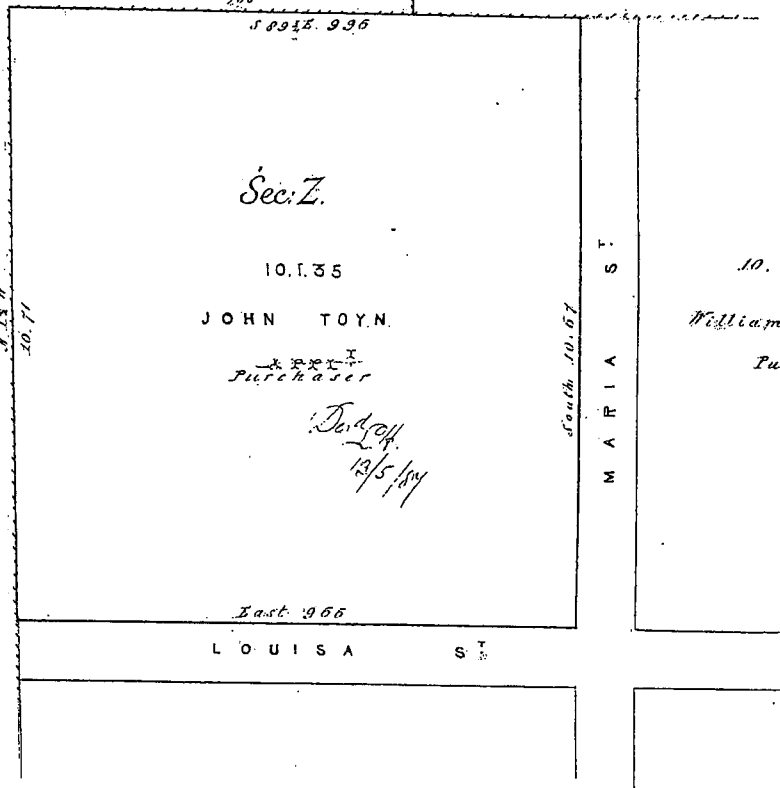
COUNTY OF
BRACKNELL TOWNSHIP
PARISH OF

Scale two chains to an inch.
Auction

C2
/5

Granted to
Garnetiel Butler

Granted to
Paul Minnett



of instructions 28th August 1873
 commenced 27th October "
 finished " "
 of close in 1873
 ed by
 examined by
 on General plan by

1873

Handwritten signature and date: October 1873.

76356

Handwritten signature.

H

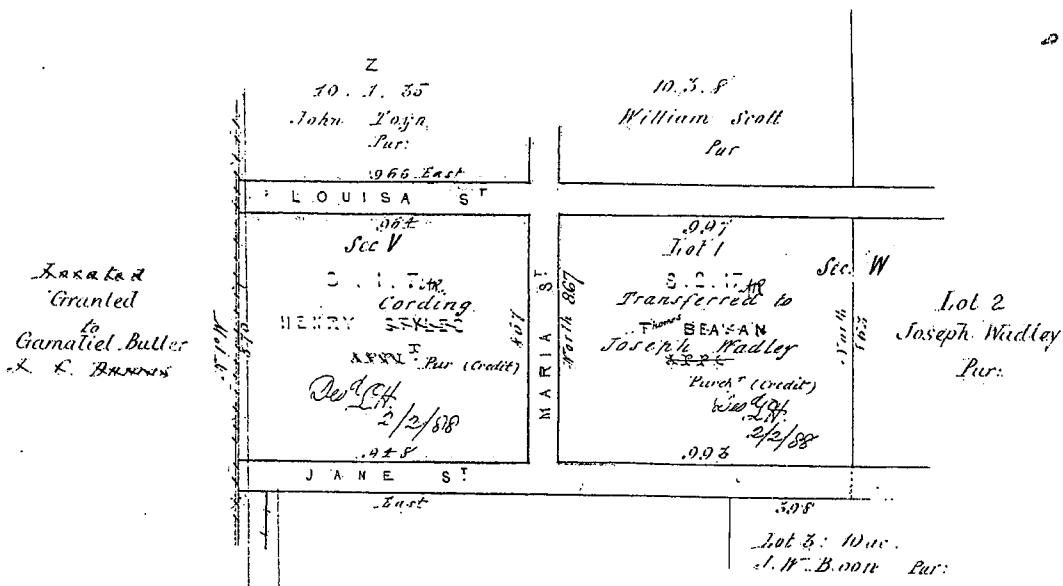
DIAGRAM FROM ACTUAL SURVEY

COUNTY OF BRACKNELL
PARISH OF

Scale FOUR chains to an inch.

Auction

C 5
A
654



of instructions Sanders 5th Oct.
 commenced Stiles 2nd Aug. Sanders 7th Oct.
 finished " " "
 of close 1 in Trilling
 called by JS
 fully examined by AR
 found in General plan by AR

Description Fair average Total

1874
18-10-74

1874

A. R. R. S. S. S.
October 1874.

76355

M. J. P.